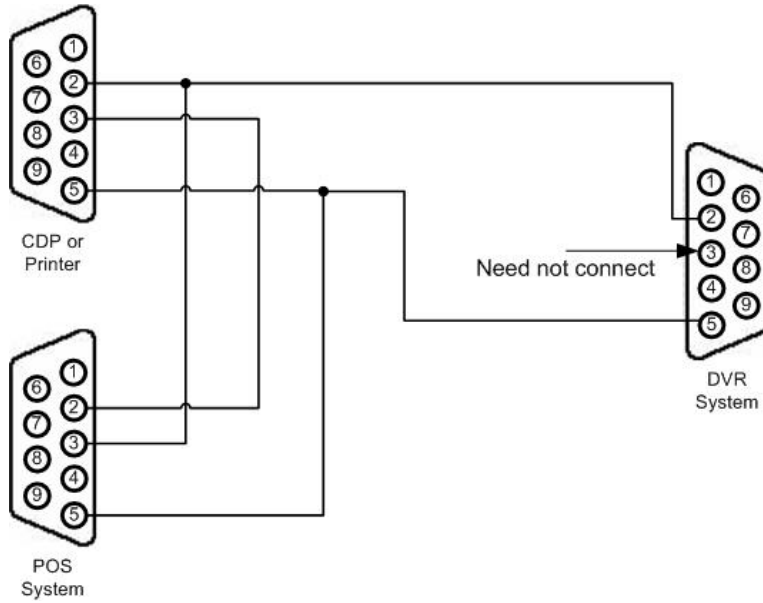


How to use POS Device

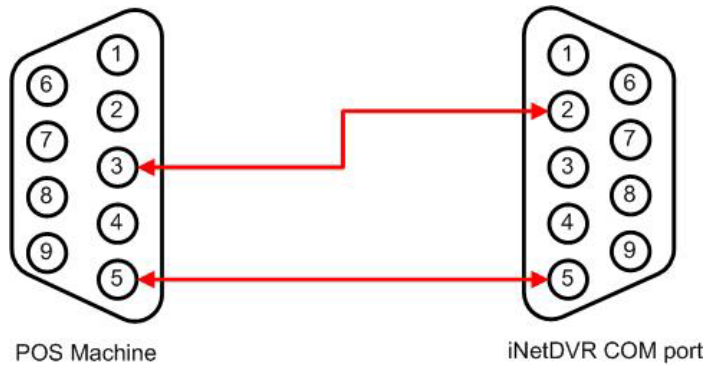
◆ Cable Connection

Serial Communication Connect

1) Branched off as like Y cable connection



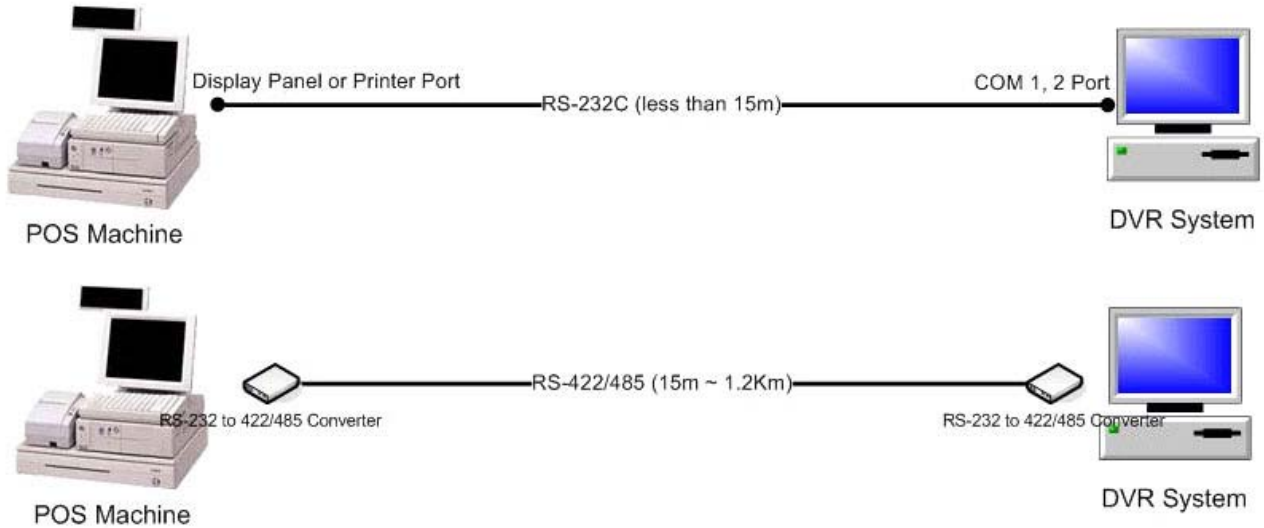
2) Directly Connection Configuration about iNetDVR with POS Machine



1) 1:1 Connect external device with DVR System

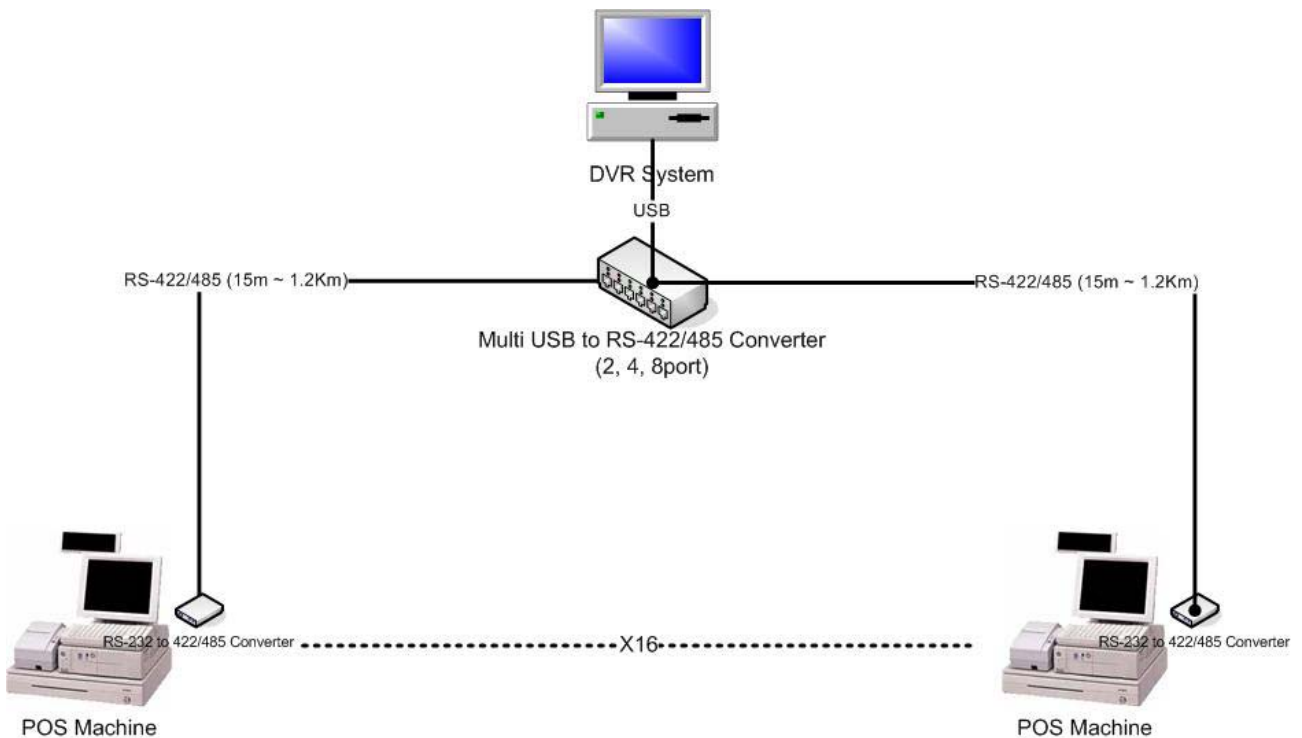
Connect External device[POS] with DVR System as like below picture.

If you connected External device[POS] to DVR System directly, connect like this picture.



2) 1:N Connect external devices with DVR System

If you connect multi external devices to one DVR system, connect by using multi USB to RS-422/485 Converter as like below picture.



Edit Protocol (EXT_PROTOCOL.INF)

It's in Modification\Recorder Folder.

It's able to change external device[POS] protocol which one you have.

If you finished to edit, you have to reinstall recorder for used edited protocol.

1 Serial Communication

```
[EXT_01]
;This defined name[in this case External POS] is device number
DEVICE_NAME = 'External POS'

;Serial communication Setting
; COM port, port number, baudrate, databit, paritybit, stopbit
COMMUNICATION_SETTING = COM,1,9600,8,N,1

;Maxium data size
TOTAL_LENGTH=0

;displayed line count on screen
TOTAL_LINE=1

;displayed charater count on a line
TOTAL_CHAR_ON_LINE=20

;where the data is displayed on screen
; 1 : top of screen
; 2 : middle of screen
; 3 : bottom of screen
DISPLAY_POS=2

;data is displayed with scroll fuction.
;how many line it is displayed
DISPLAY_SCROLL_LINE=4

;the data is displayed during this setting [second]
DISPLAY_TIMEOUT=10

;by this setting, displayed data is clear on screen
;V: Clear
;N: None
SCROLL_TIMEOUT_CLEAR=Y

;in some case, transfered data may be have not used data part in whole data
;so you can define start character or data, also End part.
TRANSACTION_START=
TRANSACTION_END=

;data protocol type from
;0: printer
;1: Micro POS
;2: ansi terminal
PROTOCOL_TYPE=0

; matched camera number
CAMERA_NUMBER=1
```

Device Number

Communication Setting

Total Data Length

Total Display Line

Maximum Character in a line

Display Position

Display Scroll Line

Display Timeout

Display Clear

Data verified Filed

Protocol Type

Matched Camera Number

In Serial Communication(COM1, COM2) case

- ◆ Communication Setting
COM,
Port Number : 1 ~ 30
BaudRate : 2400, 4800, 9600, 19200, 38400,
DataBit : 8, 7, 6, 5
Parity : N, O, E
StopBit : 1, 1.5, 2

- ◆ TOTAL_LENGTH
in Serial Communication, TOTAL_LENGTH is zero.

- ◆
◆ TOTAL_LINE
It's only in serial communication.
It's description about how many line is displayed on DVR System

- ◆ TOTAL_CHAR_ON_LINE
It's only in serial communication
It's description about how many character is displayed on a line

- ◆ Displayed Position [based 3]
where this Data displayed on Screen by this Data.
Data will be displayed at Top[1], Middle[2],Bottom[3] by setting.
ex)
DISPLAY_POS=3 [displayed on bottom at matched camera.]

- ◆ Displayed Scroll Line
If the Data has line, It's will be display as like what you setting this filed

- ◆ Scroll Tiemout
by this setting, data will be displaying on screen

- ◆ Display Clear
If data is not Continuous, by this setting ,screen is clear or not

- ◆ Data Verified Filed
for protecting recognize or display, data has other cord or value,
in this case, analysis data and set start and End position on this field

- ◆ Protocol Type
by Data type, you have to change this value correctly.
0: Printer
1: Micro POS
2: ANSI Terminal

- ◆ CAMERA_NUMBER
Setting for matching the data and Camera Image.

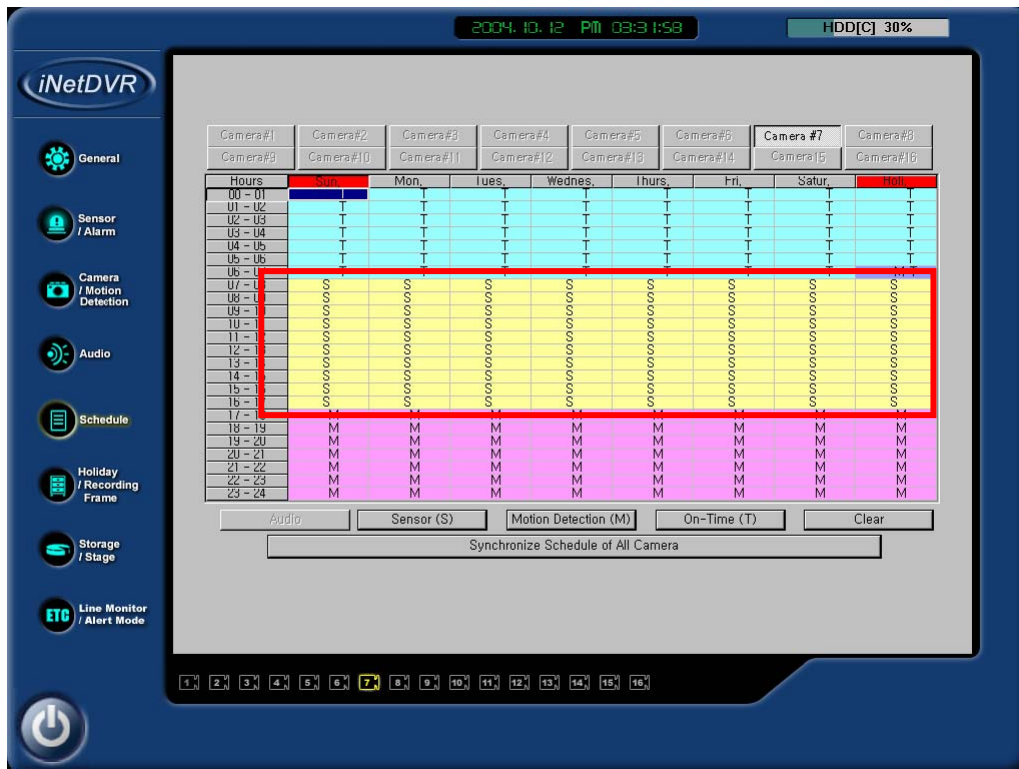
3. How to use External device[POS] on iNetDVR

External device[POS] data is displayed like below picture on DVR System-Recorder, Search and EventViewer.

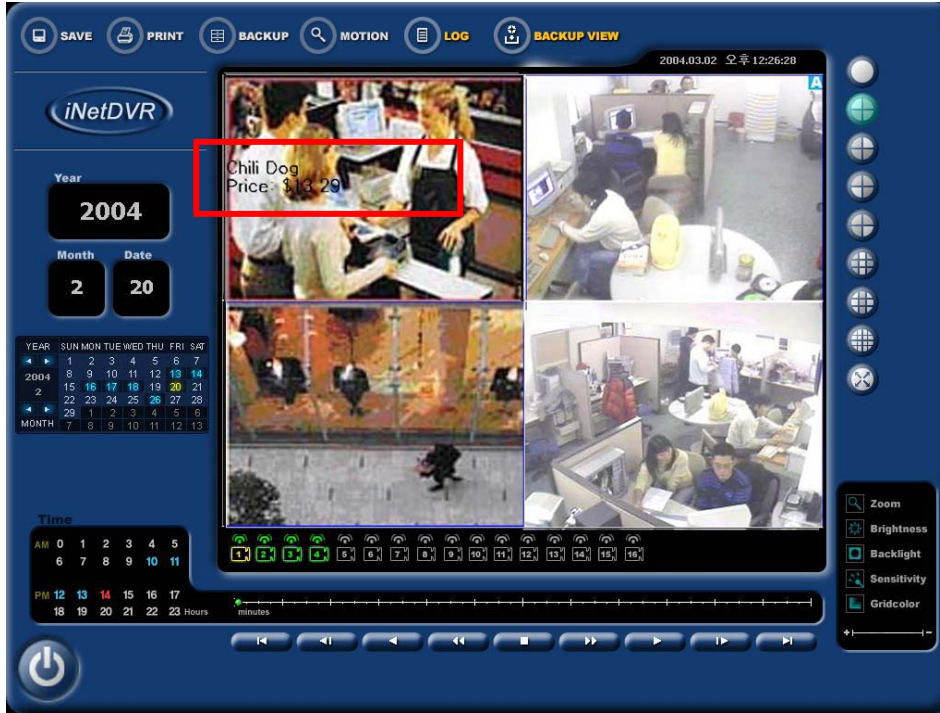
If you want to connect External device[POS] to DVR System "iNetDVR", before Installation , put the file named "EXT_PROTOCOL.INF" in "Modification folder".



Also if you want to be recorded external device[POS] data by schedule setup, Schedule is set to "sensor" on schedule tab.

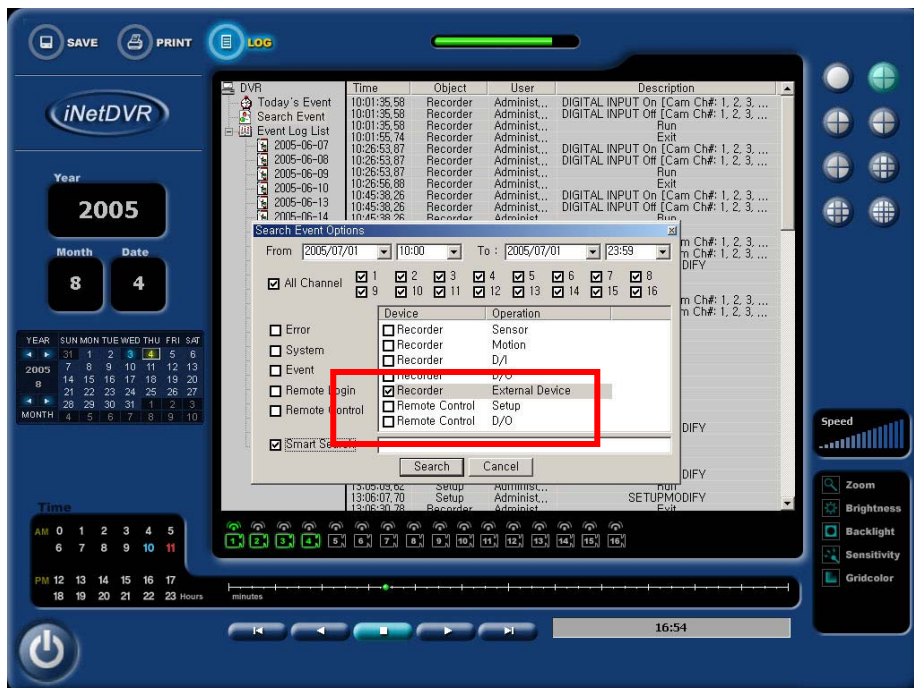


When External device[POS] Data is happened, Recorder is displayed and made log data by External device[POS] Protocol. So, When you checked EventLog by LogViewer, you can find the log about External device[POS] Data and Which Device worked.

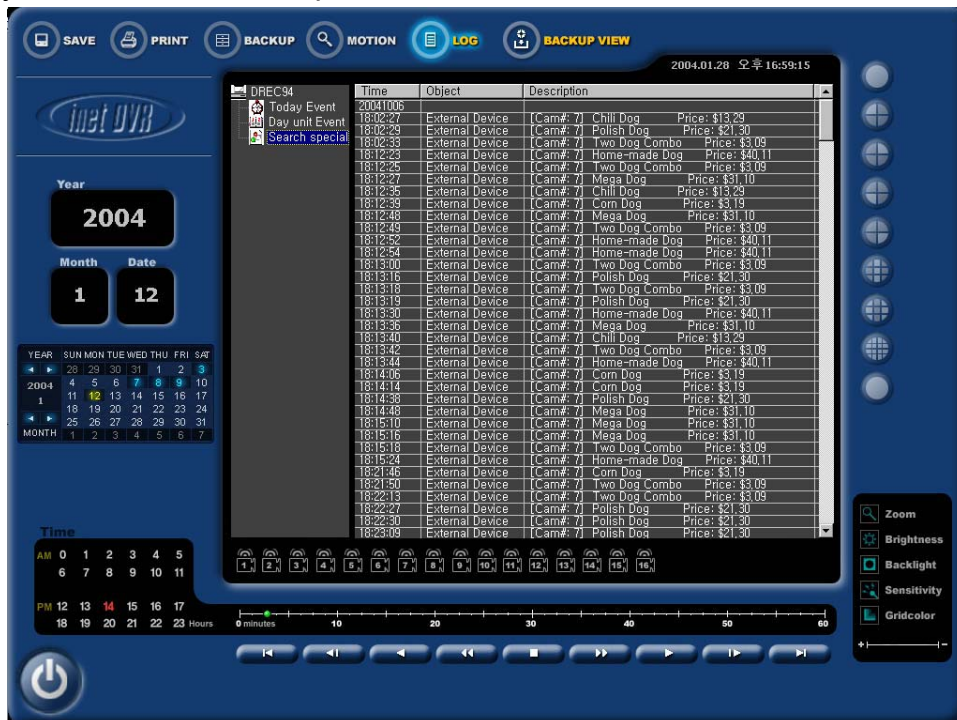


If you clicked the Log with double-clicked, Search-program displayed when External device[POS] Data was happened with channel.

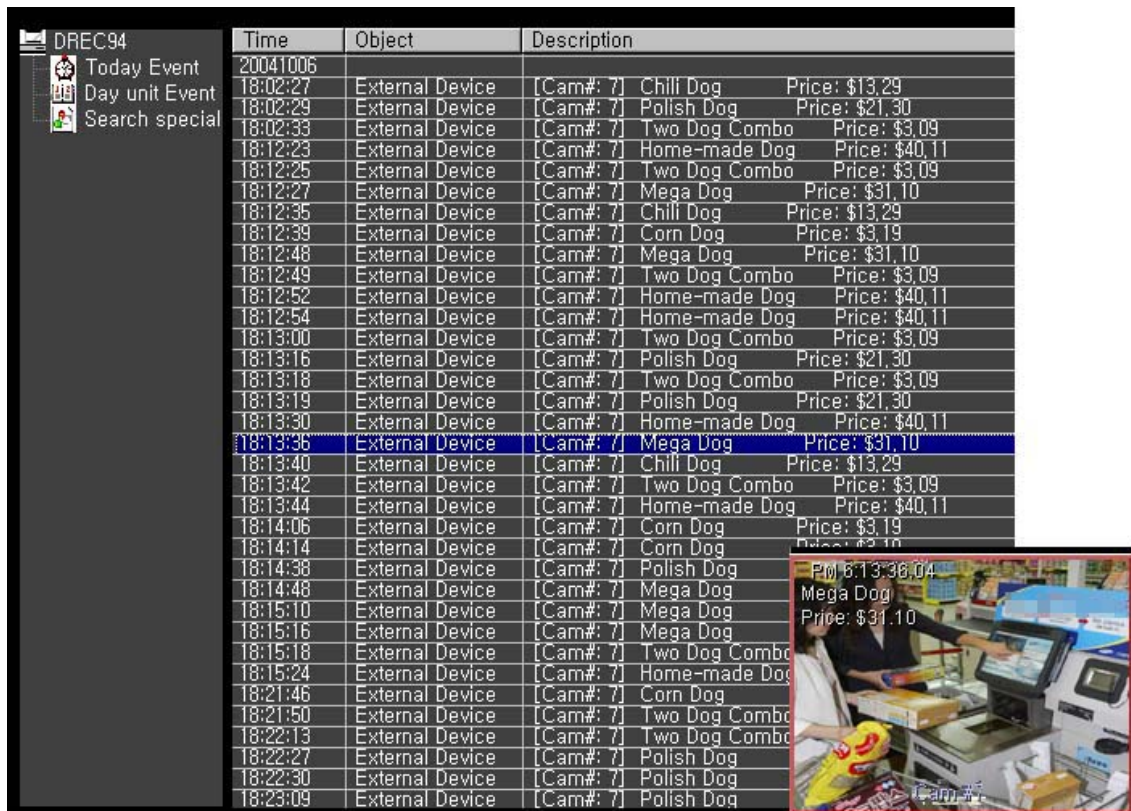
Also If you clicked double-clicked "Search Special Item", you can see this window. Check "External device[POS]", Search EXTDData is shown up.



if you want to find some data as like some product's name, price, or something in external recorded data, write this blink .and then EventViewer shows find exact data what you find as like below picture.



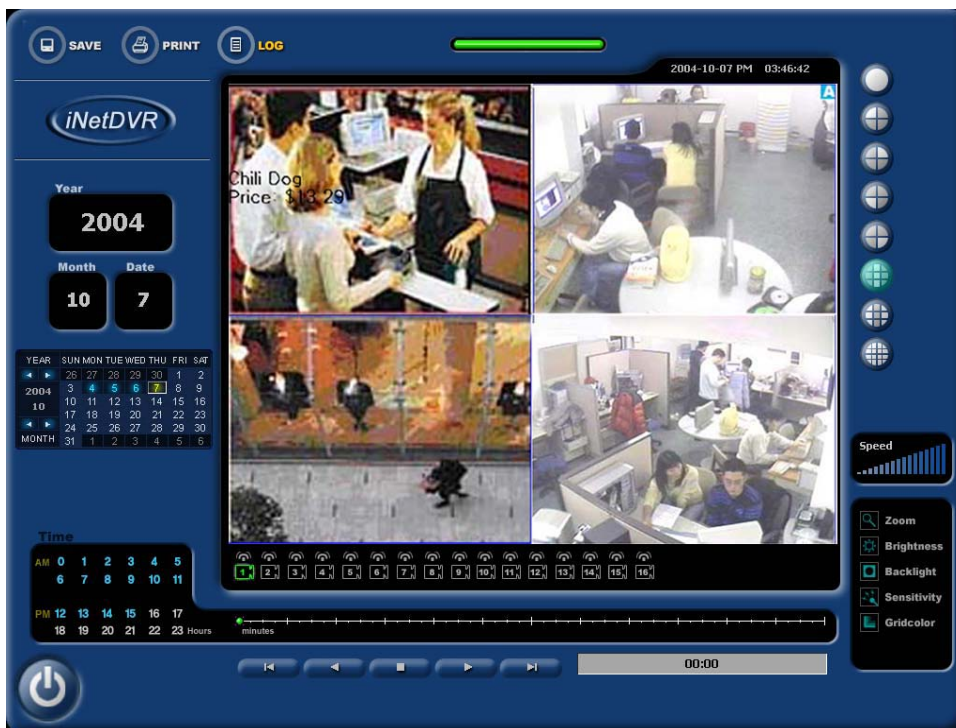
and if you want to check image in searched data list, , you can get image and searched data text on screen by double-clicked.



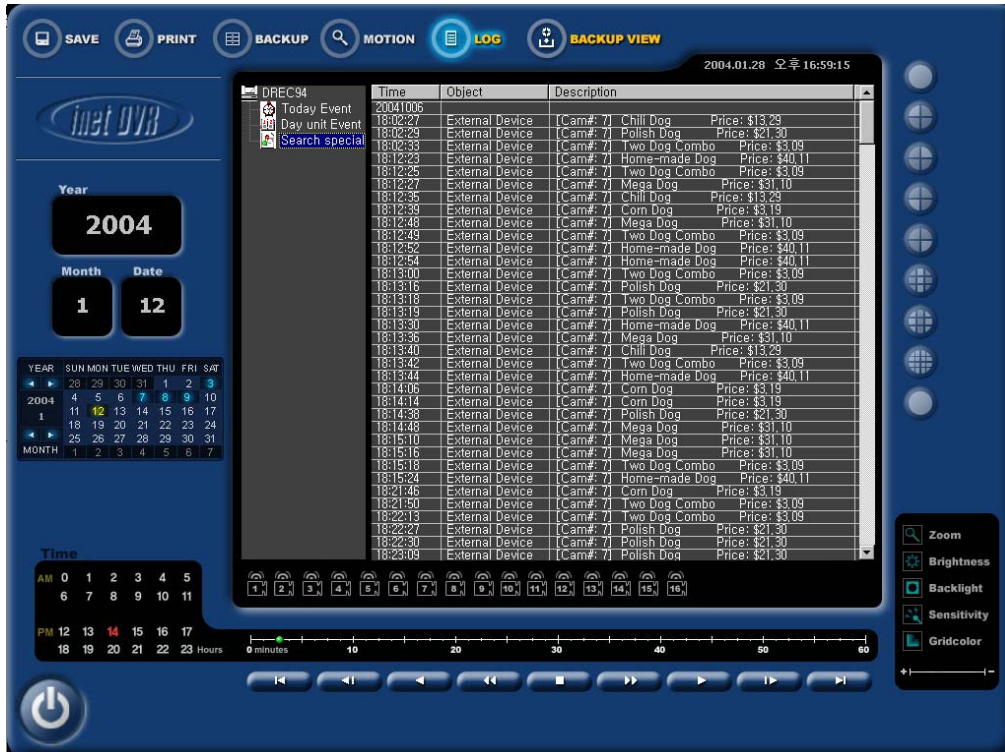
Remote Program is supported external device[POS] as same as Recorder Program.



If you connected recorder had external device[POS], your remote program shows external device[POS] data in the channel.



And External device[POS] data is searched and displayed at client search program as like recorder's search program.



and if you want to check image in searched data list, you can get image and searched data text on screen by double-clicked.

